

MAS-LM

Stationary Mechanical Animal Scale



Specifications

Full Scale Capacity:
20,000 lb

Inside Dimension:
(L x W) 12 ft 2 in x 6 ft 6 in
(L x W) 14 ft 1 in x 6 ft 6 in
(L x W) 16 ft 1 in x 6 ft 6 in
(L x W) 18 ft 1 in x 6 ft 6 in

Outside Dimension:
(L x W) 13 ft x 9 ft
(L x W) 15 ft x 9 ft
(L x W) 17 ft x 9 ft
(L x W) 19 ft x 9 ft

Decking*:
X-Lug or X-Plank rubber deck with steel I-beam construction

Racks and Gates:
Constructed of three-inch steel main tubes; two-inch steel support tubes
Two end swing gates with latch (gates swing outward from scale)

Load Cells:
Single tool steel S-beam

Warranty:
Two-year limited on the weighbridge
Two-year parts and electronics

Approvals:
NTEP CC 94-126

**Slab foundation is required*

Standard Features

- Bolt-on racks and swinging gates
- Durable X-Lug or X-Plank floor over steel I-beam deck
- Solid 48-inch kick panel rack
- Solid 48-inch kick panel swinging gate
- Spring-loaded latch on swinging gates
- Rugged all-weather powder paint
- Scale collapses for shipping
- Factory assembly at no charge

APPROVALS



Part Number/Price

Part #	Description	Inside Dimensions (L x W)	Outside Dimensions (L x W)	Est. Weight	Price
132879	Multiple animal scale - mechanical lever system with single cell	12 ft 2 in x 6 ft 6 in	13 ft x 9 ft	5,550 lb	Consult
132881	Multiple animal scale - mechanical lever system with single cell	14 ft 1 in x 6 ft 6 in	15 ft x 9 ft	6,040 lb	Consult
132882	Multiple animal scale - mechanical lever system with single cell	16 ft 1 in x 6 ft 6 in	17 ft x 9 ft	6,650 lb	Consult
132883	Multiple animal scale - mechanical lever system with single cell	18 ft 1 in x 6 ft 6 in	19 ft x 9 ft	7,210 lb	Consult

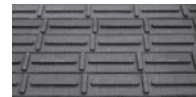
Price does not include instrumentation

Options/Accessories

Part #	Description	Price
174071	482-AG Indicator, LCD display, rechargeable battery, 115VAC	Consult
169478	920i indicator with group software 12V DC	Consult
167689	920i indicator with group software, 115V	Consult
156758	AC adapter for 920i weigh center or indicator	Consult
23113	TM-U295 ticket printer	Consult
15547	Blunt end cable for printer to indicator	Consult
71630	Tickets for TM-U295 prints 4.25 x 7 in	Consult
130961	Assembly	Consult
189536	Solar panel retrofit kit	Consult



X-Plank rubber floor



X-Lug rubber floor