

MAS-LC

Stationary Load Cell Animal Scale

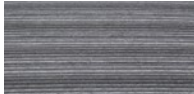


Optional indicator box and pedestal

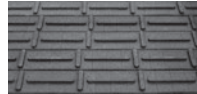


Standard Features

- Field configurable swinging gates that open left or right
- Bolt-on racks and swinging gates
- Durable X-Lug or X-Plank floor over steel I-beam deck
- Solid 48-inch kick panel sides
- Solid 48-inch kick panel swinging gate
- Spring-loaded latch on swinging gates
- Rugged all-weather powder paint
- Scale collapses for shipping
- Factory assembly at no charge



X-Plank rubber floor



X-Lug rubber floor

APPROVALS



Specifications

Full Scale Capacity:
25,000 lb

Inside Dimension:

(L x W) 12 ft 1 in x 6 ft 6 in
(L x W) 14 ft x 6 ft 6 in
(L x W) 16 ft x 6 ft 6 in
(L x W) 18 ft x 6 ft 6 in
(L x W) 20 ft 11 in x 6 ft 6 in
(L x W) 20 ft 11 in x 9 ft

Outside Dimension:

13 x 8: (L x W x H) 12 ft 7-3/4 in x 8 ft 2 in x 8 ft 1-1/4 in
15 x 8: (L x W x H) 14 ft 6-3/4 in x 8 ft 2 in x 8 ft 1-1/4 in
17 x 8: (L x W x H) 16 ft 6-3/4 in x 8 ft 2 in x 8 ft 1-1/4 in
19 x 8: (L x W x H) 18 ft 6-3/4 in x 8 ft 2 in x 8 ft 1-1/4 in
22 x 8: (L x W x H) 21 ft 5 in x 8 ft 2 in x 8 ft 1-1/4 in
22 x 10: (L x W x H) 21 ft 5 in x 10 ft 7-5/8 in x 8 ft 1-1/4 in

Decking:

X-Lug or X-Plank rubber flooring over a steel I-beam deck

Racks and Gates:

Constructed of three-inch steel main tubes; two-inch steel support tubes
Two end swing gates with latch (gates swing outward from scale)

Height:

Ground to top of swinging gate: 6 ft 7 in
Ground to top of up and over rack: 8 ft 1 in
Ground to weigh platform: 8 in

Warranty:

Two-year limited on the weighbridge
Two-year parts and electronics

Approvals:

NTEP CC 99-091
Measurement Canada AM-5284

Part Number/Price

Part #	Description	Inside Dimensions (L x W)	Outside Dimensions (L x W)	Est. Weight	Price
X-Lug Flooring					
192672	13 ft x 8 ft Multiple animal scale - load cell design, X-Lug	12 ft 1 in x 6 ft 6 in	13 ft x 8 ft	4,900 lb	Consult
192670	15 ft x 8 ft Multiple animal scale - load cell design, X-Lug	14 ft x 6 ft 6 in	15 ft x 8 ft	5,450 lb	Consult
192669	17 ft x 8 ft Multiple animal scale - load cell design, X-Lug	16 ft x 6 ft 6 in	17 ft x 8 ft	6,020 lb	Consult
192668	19 ft x 8 ft Multiple animal scale - load cell design, X-Lug	18 ft x 6 ft 6 in	19 ft x 8 ft	6,720 lb	Consult
192665	22 ft x 8 ft Multiple animal scale - load cell design, X-Lug	20 ft 11 in x 6 ft 6 in	22 ft x 8 ft	7,300 lb	Consult
192664	22 ft x 10 ft Multiple animal scale - load cell design, X-Lug	20 ft 11 in x 9 ft	22 ft x 10 ft	8,610 lb	Consult
X-Plank Flooring					
191804	13 ft x 8 ft Multiple animal scale - load cell design, X-Plank	12 ft 1 in x 6 ft 6 in	13 ft x 8 ft	4,900 lb	Consult
191803	15 ft x 8 ft Multiple animal scale - load cell design, X-Plank	14 ft x 6 ft 6 in	15 ft x 8 ft	5,450 lb	Consult
191566	17 ft x 8 ft Multiple animal scale - load cell design, X-Plank	16 ft x 6 ft 6 in	17 ft x 8 ft	6,020 lb	Consult
185865	19 ft x 8 ft Multiple animal scale - load cell design, X-Plank	18 ft x 6 ft 6 in	19 ft x 8 ft	6,720 lb	Consult
191805	22 ft x 8 ft Multiple animal scale - load cell design, X-Plank	20 ft 11 in x 6 ft 6 in	22 ft x 8 ft	7,300 lb	Consult
191806	22 ft x 10 ft Multiple animal scale - load cell design, X-Plank	20 ft 11 in x 9 ft	22 ft x 10 ft	8,610 lb	Consult

Price does not include instrumentation

Options/Accessories

Part #	Description	Price
174071	482-AG Indicator, LCD display, rechargeable battery, 115VAC	Consult
131436	920i® based weighcenter with group animal software, TM-U295 ticket printer, DC version (requires 12 VDC power)	Consult
205324	920i based weighcenter with group animal software, TM-U295 ticket printer, AC version (requires 115 VAC power)	Consult
167689	920i 115 AC indicator with group animal software	Consult
169478	920i 12V DC indicator with group animal software	Consult
130961	Factory scale assembly and calibration (requires local certification)	Consult
156758	AC adapter for 920i weigh center or indicator	Consult
23113	TM-U295 ticket printer	Consult
15547	Blunt end cable for printer to indicator	Consult
185872	Indicator/printer enclosure	Consult
206789	Indicator pedestal	Consult
71630	Scale tickets, 500/pack	Consult
177788	Transient protection package	Consult
127561	16 ft cable with 4-pin female connector (and dust cap) to blunt end. Blunt end to wire into J-box.	Consult
127553	25 ft extension cable with 4-pin male and 4-pin female connectors on each end	Consult
176542	16 ft cable with 4-pin male connector to blunt end. Blunt end to wire into indicator.	Consult

Consult factory for concrete foundation prints

Custom Sizes

Class	Description	Price
Legal For Trade Application Parameters for MAS-LC Series CC 99-091		
Class III-L	Applications: Livestock (multi-animal) up to 25,000 lb, 5 lb increments	Consult